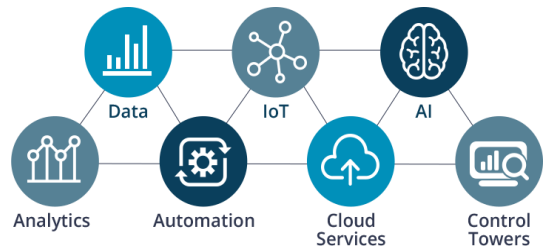


# DATALINK

TOTAL SOLUTION OF DATA INTERFACES AND REPORTING



**Real-Time Data Services Solution**

for

Management Information System and Situation Awareness Application

**Digital Data Transformation**

Enterprise Data Integration with Digital Transformation Platform and Application Service

**Integration**

**OPTIMIZATION**

**ANALYTIC**

**Transformation**

**Information**

**BIG DATA**

**REAL-TIME**



**INTERFACE**

**VISUALIZATION**

**Real-Time Data Integration**

Embedded with seamless data integration. Fully programmable platform

Designed with customization, extensibility and ease of interface

# DATALINK

**DATALINK**, digital transformation with Real-Time Data Services designed solutions for Management Information System and Situation Awareness Application.

Integrate various data with built-in data platform, Digital Transformation with multiple data manipulation tools, Data Visualization with stunning dashboards and reporting tools. It is the perfect solution for Real-time Data Analytic and Report which allows real-time applications to communicate with enterprise and any others legacy applications source of data.



## **BENEFITS**

- Real-time / Near Real-time Data Management and Data Analytics
- Ease of Integration, accelerates with Modern and Legacy platform
- Get Insights Data faster with Graphic Visualization
- Enhances situational awareness
- Flexible platform and smart tools with user friendly
- Modern system platform, Less maintenance and Reduce software life cycle costs
- Customizable design and enhancement for business intelligence data visualization

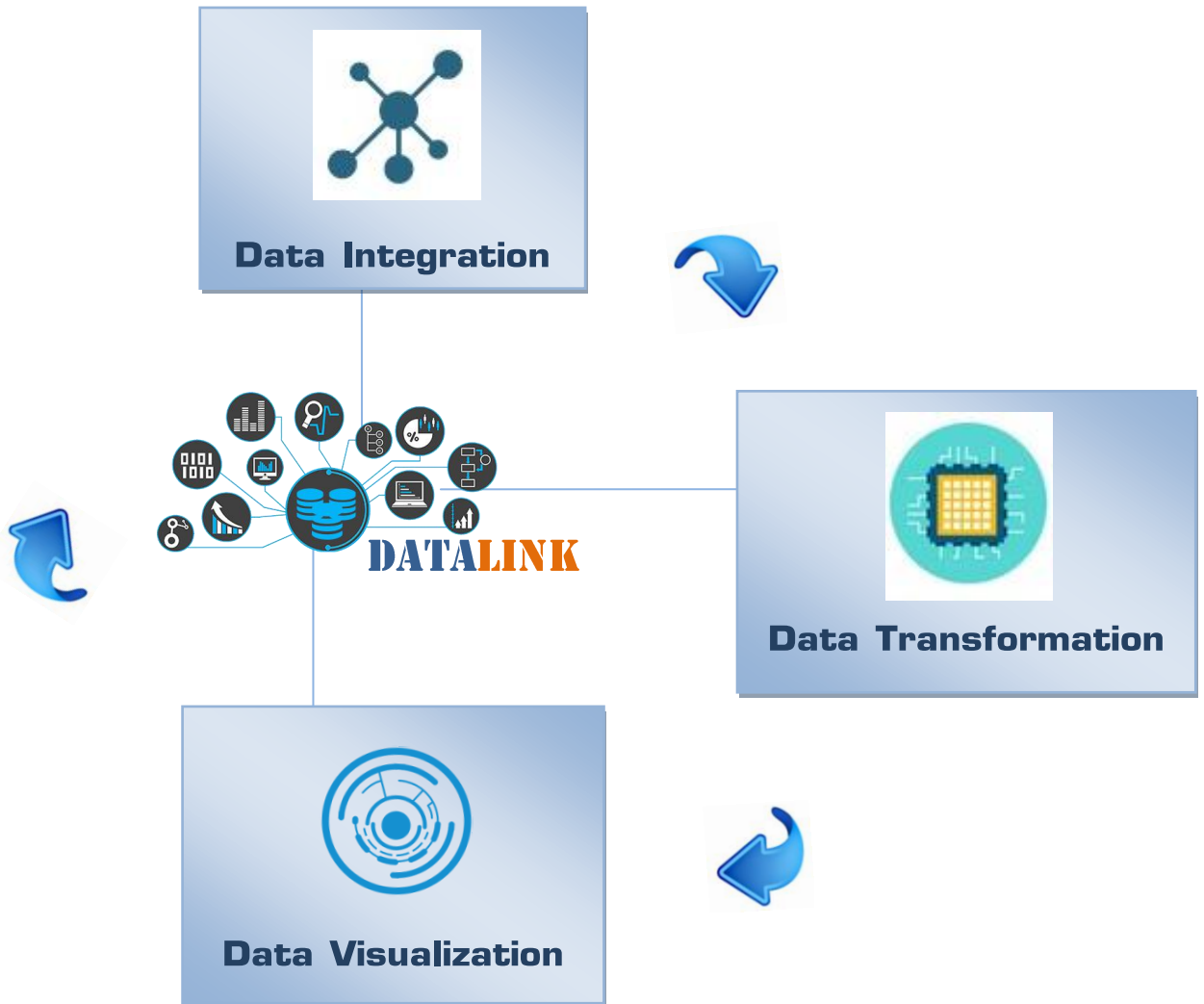
## **CAPABILITIES**

- Delivers throughput up to millions of messages per second
- Provides consistent microsecond-order low latency
- Supports ad hoc systems without administration or servers
- Communicates reliably over unreliable and non-TCP links
- Supports security and safety standards
- Connects diverse enterprise, mobile and embedded platforms



## DATALINK Digital Transformation

DATALINK offer customizable module for Digital Data Transformation with tailor functional and design to meet each customer operation and environment.





## Data Integration

Ease of connecting to work with any data from multiple data sources using the business intelligence and integration tools. DATALINK includes a powerful set of data connector interface capabilities to develop and integrate distributed applications builds on Data Distribution Service for Real-Time Systems (DDS) standard.



Connect to any data source including relational databases, OLAP databases and cubes, file-based data, web services and simple text files. It extends DDS with support for other integration standards, advanced transformation and routing capabilities, and a comprehensive set of tools and run-time services. Embedded with seamless data integration, fully programmable platform, designed with customization,

extensibility and ease of integration. It supports many levels of customizations from simple end user configurations to CSS styling and full scripting.

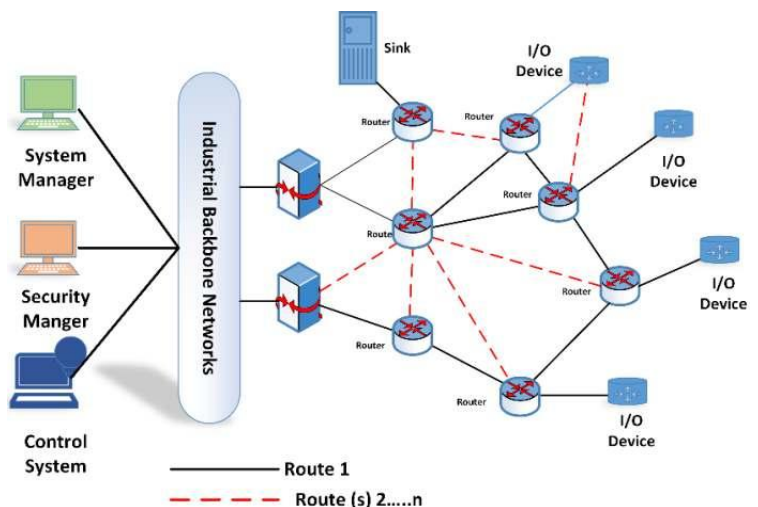
### Easily Integrates Into Existing Systems and Applications

Easily integrate into existing systems and other applications, the features are flexible to consolidate data from any data source, providing seamless data delivery and a consistent user experience.

- With flexible platform, full API support and extended scripting. The interface module can integrated and embedded into existing systems and applications
- APIs allow for easy integration and support for authentication, user management and administration

The system comes with public APIs for developers to customize and extend the platform to meet specific needs;

- Authentication – manage users, change security settings and log users in and out



- Visualization Controls – add your own visualizations
- Data Providers – connect to legacy or otherwise unsupported data source
- Export – export data into new formats
- File System – manage file system objects
- Formulas – create new mathematical formulas that users can add to their dashboards
- Accounts Provider – Sync users, groups and tenants with existing applications

### Interface Protocol Support

- Modbus
- BACnet
- MQTT
- HTTP
- SNMP
- Serial
- MBus
- DNP3
- POP3
- Allen Bradley
- Haystack

### Data Interface Support

- Relational Database (RDBMS)
- Programming Interfaces
- OLAP Database and Cubes
- Web-Based Data
- Files-Based Data

DATALINK provides end-to-end support for the full Microsoft BI (MSBI) stack and integrates with entire suite of Microsoft BI technologies.

### Authentication

DATALINK provides optional support to integrate with Windows authentication. The users can log in to the system using a Single Sign On (SSO) with their Windows domain credentials. Businesses running non-Windows networks can either use the built-in account management system, or integrate with a custom network using our public authentication API.

### Web Integration

Embedded and integrated into existing websites adding powerful interactive dashboards and reports to your internal or public websites which is easily integrates with all major web technologies, including:

- SharePoint
- Basic HTML pages
- Mobile-friendly HTML5 pages
- Web applications





## Data Transformation

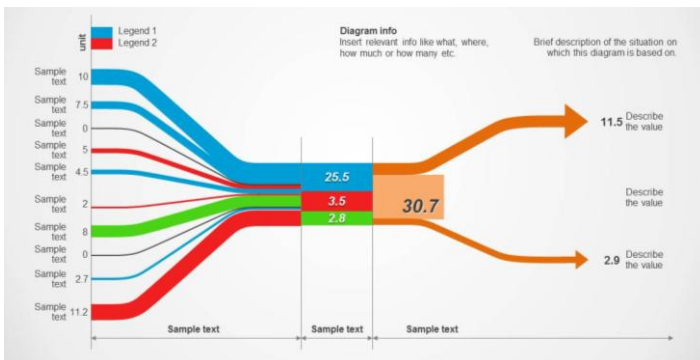
### Explore Data

Access and easily see which data and metric sets are available and then perform various actions to Explore, analyze and visualize all data including copy, move and edit. Managing data structures including database table fields and cube measures and dimensions, and transform onto the dashboard for further data discovery, filtering, sorting, grouping and drill downs.



### Data Relationship

Uncover hidden relationships within your data using relationship diagrams visualizing explicit connections between many different data points at a glance.



Use visual diagrams to visualize distribution and flow of data values such as energy/money/material in graphic.

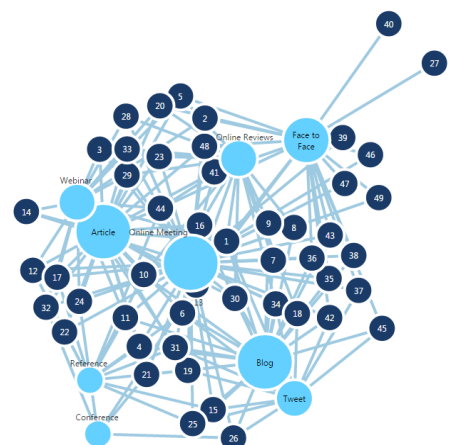
### Data Grid

The data grid control gives the ability to visualize tabular data in a way that looks and operates better than a standard spreadsheet or table. Use the grid control to display lists, rankings or highly detailed information that attractive, highly interactive and meaningful.

### Real-Time Data Analytics

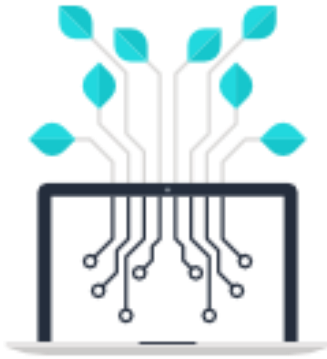
Get tailored with real-time visual access and analytics for all data, information and results.

Experience predictive and advanced data analytics with powerful transitions and animations for data changes and data analysis on any device to quickly observe, monitor and realize the data analytic value.



## Interact and analyze data

Advanced data analytics detects hierarchies and time dimensions that enable powerful drill down to analyze data faster and thoroughly, and improve performance in all data areas.

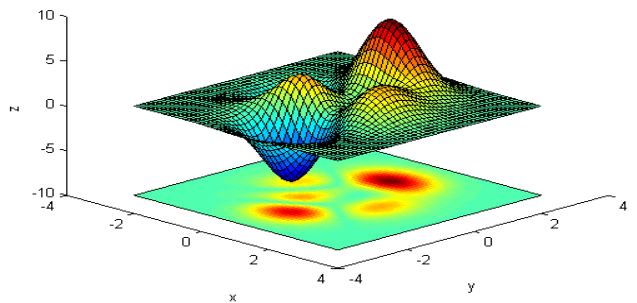


### Predictive

To uncover patterns of data and predict trends, the analysis lets you write scripts programming language to perform statistical and predictive analysis on data. Using advanced statistical computing to visualize and interact with advanced interactivity and intuitive data discovery operations for superior data analysis with trend and forecasting, priority ranking and statistics for data manipulation.

### High Performance Time Series Historian

DATALINK historian are capability design to storing billions of historical values to a complementary set of time-series database applications that are developed for Real-Time operational process data with high frequency throughput while utilizing of small storage disk space.



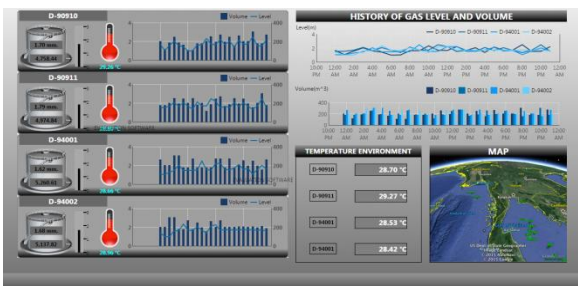
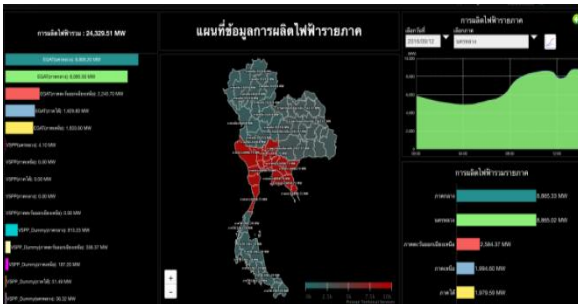




# Data Visualization

The DataLink system comes complete with highly-customizable graphic visualizations including interactive charts, table, trend, gauges, maps, scorecards and more customization options and visual design element to create powerful Dashboard & Reports.

## Graphic Visualizations



### Chart and Graph

The Chart and Graph control offers numerous graphic visualization and chart types to choose from such as column, bars, stacked, lines, point, bubble, pie, areas, box plot, dots, radar, funnel, range, radial graphs, candlestick and stock.

Chart control features include:

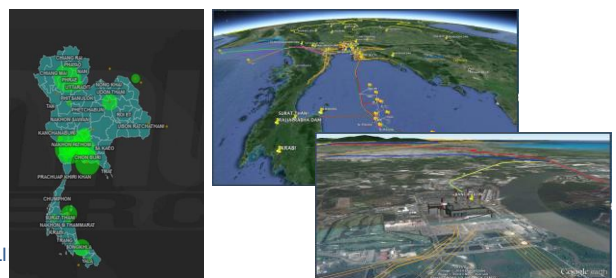
- Annotations
- Secondary axes, Mixed chart types
- Chart animations
- Multiple axes per chart side
- Data point markers
- Data selection, date, time, and report template predefine
- X & Y axes with smart axis labeling, major & minor tick marks, major & minor grid lines, and customizable intervals
- Data and user annotations (plus user annotations along a range of dates)
- Support for plotting against numeric, date/time and categorical scales
- Settings for controlling the appearance of everything above, such as colors, gradients, borders and line dash styles

### Map

The Map control provides a visualization and interactivity, to enhance the dashboard by displaying and customizing a wide variety of maps.

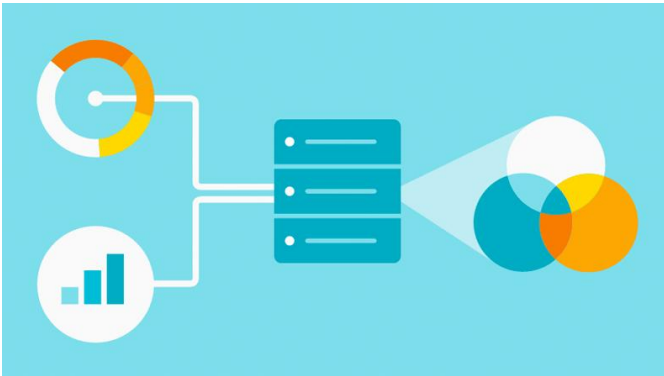
Display in 2D and 3D map are making geographic data easier to read and interpret, adding custom actions to the maps to control or filter what data is displayed on the dashboard by region, city or other map elements is most powerful tools.

- Supports ESRI and XAML shape files, which allows for the drawing of diagrams via Expression Blend
- Google Map and Google Earth Enterprise Solution integration



## **Reports**

The reporting service support to create any business intelligence report needs, whether multi-page reports or ad-hoc reports. The dashboard and reporting tools are easy to create complex views. All of the required details can be easily combined into a single report and support grouped of predefines report as needed for maximum insight.



Reports can be interactive and designed to be simply viewed or exported and printed.

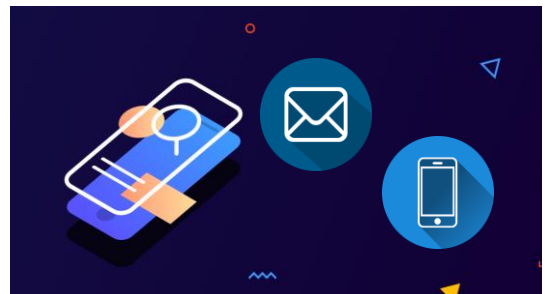
Customizable reports are available to provide report template which include table, chart, trend and any 2D/3D geographical view to enhance creation

of report visualization.

- Predefine report template to increase efficiency and save time by eliminating manual reporting processes
- Define template or Scenario setup to better versioning control for specific task and routine reports
- Encourage user collaboration through built-in annotations, alert notifications, and scheduled reports
- Keep dashboards and reports in a single familiar portal rather than navigating to a different tool for reporting
- Export report and data to various formats, CSV, Excel, spreadsheet, PDF, etc.

## **Notifications**

A notification is an automated sent out in response to the specific event. DATALINK can be set up to send automatic notifications when data reaches certain conditions or recurring schedule.





## **Display on Mobile**

With the display on mobile, the smart phone, tablet or mobile devices are supported. The system provides the HTML5 interact with the report and dashboards directly web base application from standard web browser.

The dashboards and reports are fully interactive infographic and can be viewed on all devices screen, tablets, smart phones, desktop PCs and laptops via web browser. The users get immediate access to the

data without having to install any custom software or application.

- Tile-Based Layout for a sleek and modern look
- Customize the home screen to view the most relevant metrics
- Drill-Down to powerful dashboards by tapping
- Interface designed for small screens to be touch friendly
- Scale zoom in to maximize the available screen size without compromising the aspect ratio

# **D A T A L I N K**

TOTAL SOLUTION OF DATA INTERFACE AND REPORTING

